

BE A SMARTER SHOPPER WHEN BUYING EYEWEAR!



Shopping around is the best way to get a good idea of what your options are for glasses and contacts. Create a list of questions you can ask at every store you visit, so you can make a true comparison later. You will see a wide range of glasses, and a range of prices too. Before you actually make your purchase, make a list of your needs, wants, and how much you are willing to spend. Decide if you want name-brand frames, and if you need tinted lenses.

Any frame you choose should be comfortable, not too tight and not too heavy. Poor-fitting frames can lead to discomfort when you wear your glasses. When shopping for frames, consider the shape and size of your face, color and style preferences.

Make sure you feel confident in your selection & understand the pricing for these options:

- **Frames:** Typically plastic, metal or other materials used to hold lenses – overall sizes and styles vary, so will the prices.

- **Lenses & Lens Coatings:** The two sections customized with your prescription are the lenses, available in Single Vision, Bifocals, Progressives, etc., made of different lens materials, and thicknesses.

Available lens coatings include Scratch Guard, Anti-Reflective, and Color Tints which may be added for an additional price.

You are ready to buy your eyewear when you have answers to all your questions.

Store Policies - Remember to ask about payment, deposit, return, exchange & loss policies.



CALL US! Still have questions about your benefit or coverage? Give us a call so we can answer your questions. **212-586-6400**

REMINDER! Use your secure account on **HappyHealthyMe.org** to keep track of your healthcare appointments.

THE EYE CARE BENEFIT



New! Beginning March 2016

THE EYE CARE BENEFIT



Use the new Funds' Eye Care locations for your eye exams & prescriptions!

We've listened to you and now it's here! A \$200 reimbursement will be available for prescription eyewear purchased on or after March 1st 2016. **The reimbursement can be applied to buying frames, lenses, contacts & for paying contact lens fitting fees.**

The new Eye Care Benefit was designed to make it easy for you & your family to take care of your eye health. **You can now choose where you go for eye exams, eye glasses and contacts!** Call us if you have any questions: 212-586-6400.

NEW FUNDS' EYE CARE LOCATIONS FOR EYE EXAMS + PRESCRIPTIONS OPENING MARCH 2016!

Brooklyn Health Center 68-80 Schermerhorn St., Brooklyn, NY 11201	Harlem Health Center 133 Morningside Ave., Manhattan, NY 10027	^{New} Midtown Eye Care 14 Penn Plaza, Ste. 408, New York, NY 10001	Queens Health Center 37-11 Queens Blvd., LIC, NY 11101
--	---	--	---

EYEWEAR REIMBURSEMENT STARTING

MARCH 1, 2016—A \$200 reimbursement will be available to each eligible adult or child on your plan, in need of corrective lenses according to your eye doctor.

Unused yearly benefits will be rolled over to receive a maximum reimbursement of \$400 for each eligible person on your plan, with a vision prescription.

WHAT YOU NEED TO REQUEST YOUR REIMBURSEMENT

To repay you for purchasing glasses or contacts, we will need three (3) items:

1 VISION PRESCRIPTION

An eyewear prescription is needed to process a reimbursement. Eye exams should be performed every 1-2 years to catch slight vision changes, and make sure your eyes are still healthy. Using the Funds' Eye Care locations will make it easier to monitor your eye health.

Go to a Funds' Eye Care location for your eye exam, or a trusted eye doctor near you. Using a Funds' eye doctor will make it easier to process your reimbursement, since we'll already have your prescription.

2



ORDER DETAILS

What did you order & was it for you or someone else on your plan? Each individual on your plan with a vision prescription is entitled to \$200 reimbursement each year, with a qualifying purchase. To process your request, we will need to see that total spent per person on your plan.

Go to a trusted eyewear store for an exam, or bring your prescription from us, to purchase eyeglasses or contacts. Stores vary, so the order details (showing who ordered what) may be a separate document or combined with your proof of purchase.

3



PROOF OF PURCHASE

Make a copy of your printed receipt, checking or credit card statement showing proof of your eyewear purchase.

To process and reward your reimbursement, we must have all of the items described here sent in one envelope within one (1) year of purchase.

Eye Exams at the Health Center are free. You can also use an eye care center of your choice, near you and use the \$200 reimbursement to cover your exam + eyewear costs.

MAIL IN YOUR PROOF: Mail copies of your Vision Prescription (not required for those who were examined at Funds' Eye Care), Order Details & Proof of Purchase to:

NYHTC – Eye Care
PO Box 36-20953
New York, NY 10129

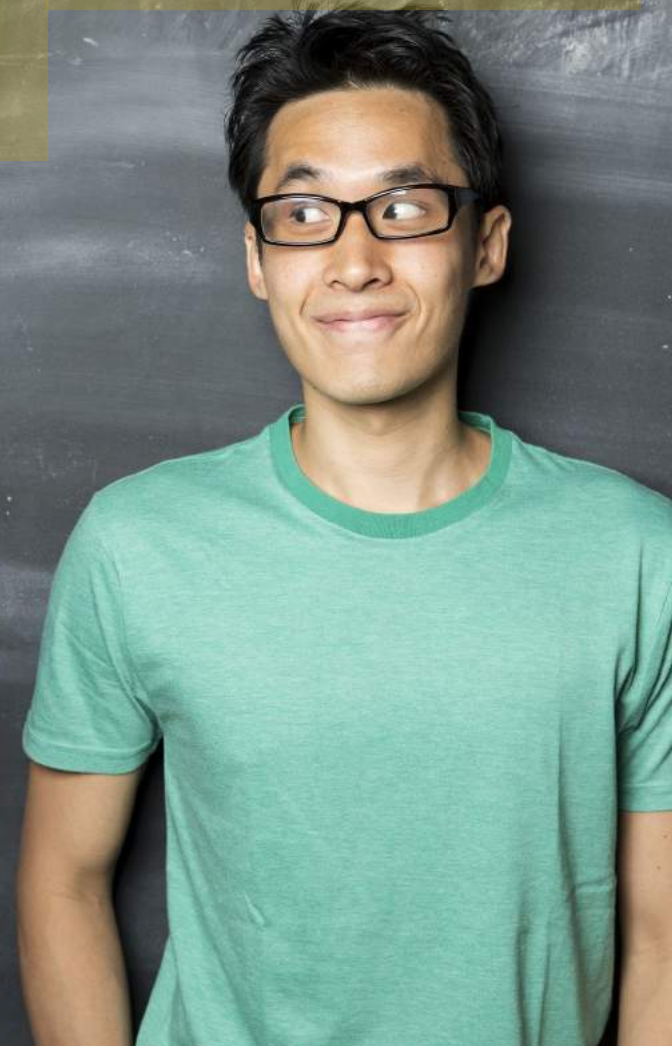
DO NOT SEND ORIGINALS THROUGH POSTAL MAIL. Reimbursement checks or notices of incomplete requests we cannot process will be sent within **30-days after receipt.**

Keep Your Eyes Healthy!

Eye doctors recommend that healthy adults ages 18 to 60 get eye exams every other year, if they do not wear contact lenses and have no health and vision problems. If you do wear contacts, or have other health issues that might affect your vision, please get an exam every year. Eye exams take anywhere from 10 to 20 minutes. **Read this article from www.geteyesmart.org: "Signs You May Need an Eye Exam Right Away" 10/27/15**

More than 3.4 million Americans aged 40 years and older are blind or are visually impaired, according to the Centers of Disease Control and Prevention (CDC). That's why regular comprehensive eye exams are so important – they can be particularly helpful in detecting diseases that have no or few symptoms, such as glaucoma and age-related macular degeneration. However, in some cases, many people experience symptoms that require immediate medical attention. The following are just some of the signs for serious eye disease that may require treatment right away to avoid vision loss or eye damage. **If you have any of these symptoms, see an eye doctor right away.**

Symptoms/Warning Signs—Bulging of one or both eyes—Dark curtain or veil that blocks your vision—Decreased vision, even if temporary—Double vision—Excess tearing—Injury to eye—Loss of peripheral (side) vision—Pain in the eye—Unusual or persistent redness



Call 212-586-6400 if you have questions about the Eye Care Benefit.